

Model: HCD-26MAH

26-inch Public View LCD Monitor



Specifications:

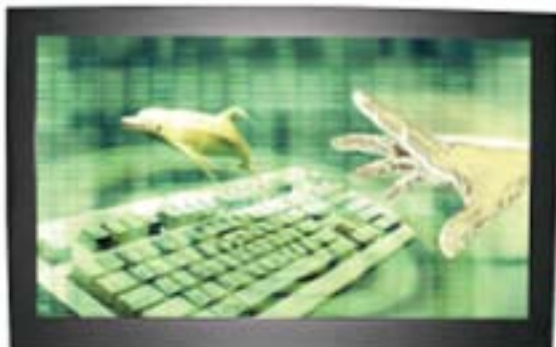
Recommended Resolution	1366 x 768 Hz
Panel Aspect Ratio	16:9
Viewing Area	575 x 323 mm
Pixel Pitch	0.294 x 0.294 mm
Brightness	450 cd/m ²
Contrast Ratio	2500:1
Backlight Type	4 CCFL
Panel Lamp Life	40,000 Hours
Display Colors	16.7 Million
Speakers	N/A
Horizontal Frequency	31.5kHz to 80kHz
Vertical Frequency	60 Hz to 75 Hz
Input Interfaces (Video)	2 BNC Input/Output, 1 VGA, 1 DVI Input, 1 S-Video Input
Remote Control	Yes
Sync Format	NTSC/PAL Autosensing
Operating Temperature	32 to 104F (0 to 40C)
Dimensions	25.6"W x 18"H x 4"D
Unit Weight	24.2 lb (11 kg)

The HCD MAH Series of high performance LCD monitors are designed specifically for the security industry to display high quality composite video or computer signals using multiple inputs.

- Space-Saving, Flat Panel Design
- Rugged Steel Enclosure
- Four Long Life CCFT Backlights
- NTSC & PAL Autodetect
- Internal Camera Input/Output, Auxiliary Input/Output
- VGA Input and Deinterlacing for High Quality Video
- 3-D Digital Comb Filter
- Remote Control Operation
- Maximum Brightness of 450 cd/m² (HCD-26MAH)
- Maximum Contrast Ratio of 2500:1 (HCD-26MAH)
- Maximum Response Time of 8ms (HCD-26MAH)
- 100/240 VAC, 60/50 Hz Autoranging Power Supply
- Low Power Consumption (<130 W)



More Images



*Actual Product May Differ From Image