

# HVRM Series - HD DVR

## HD, DVR, NVR, Video Server, IP Cam

**NEW!**

### 8/ 4 Channel HD DVR



HVRM-HD800M, HVRM-HD400M, HVRM-HD400H

HD Series support 8/4 HD video channels. Video, audio, and Text Event-logs are digitized and stored on up to 4 internal hard-drives. Using advanced H.264 compression, average file size is 2-3KB while still maintaining clarity enough for facial-recognition. Due to our H.264 video compression, the HD series processes video into crisp, clear, 1080p resolution up to 30 frames per second.

### Key Features

- 8/4 channel HD-SDI stand-alone DVR with H.264 and JPEG dual codec
- 8/4 channel Max. 120ips recording with 720p , 60ips recording with 1080p
- Adjustable resolution (CIF, 2CIF/HALF, 4CIF/D1, 720p, 1080p) and frame rate per channel
- 4 internal HDDs with SATA type (Max. 4 HDDs can be installed)
- Support external storage with Max. 32TB via Storage (HVRM-04S) or 8TB with eSATA
- Support Multi stream for Recording and Network and mobile view simultaneously
- USB Mouse and User friendly
- 4ch audio inputs for recording and 1ch output for two-way audio
- Built-in 1 HDMI video out supporting 1080p/,720p & 1 VGA out
- Built-in multiplexer for 8/4 channel live monitoring and playback (1/4/9 mode)
- Built-in DVD writer, 2 USB and eSATA port for data backup
- Support large scaled storage via Gigabit Ethernet
- PTZ control (support preset) via RS485/232
- Support static and dynamic IP for xDSL, cable-modem user
- Support IR remote control and external keyboard via RS485/232
- Provide remote monitoring software (Control Center software)
- Built-in web server for web browser viewing and playback
- Support NTP (Network time protocol) for time synchronization
- Schedule, Event, Thumbnail, Date/time, log, text, smart search available from Control Center software
- Support IPFR (Intelligent power failure recovery)
- Mobile Viewer supported (For iPhone, Black Berry, Android platform)
- HD-SDI Video Input Standard SMPTE 292M applied
- FCC, CE, MIC, RoHS Under approval

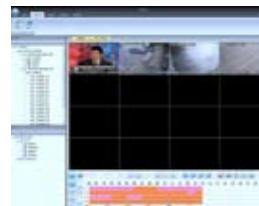
### Control Center Software



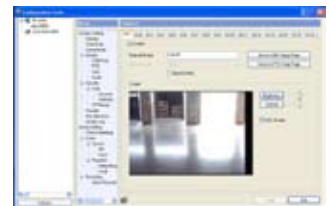
Control Center



Mapping Feature



Playback



Configuration Tool

- Dual monitor support
- Support max 128ch simultaneous monitoring (when using dual monitor)
- Various screen division (1/4/9/16/25/36/49/64)
- Alarm pop up and sequential switch monitor
- Support DirectX display (Full screen display available)
- View set mode (Group and Map mode for management of each channel)
- Recording (.re4)
- Supports Windows Mobile for PDAs and Smartphones
- 512 Site
- Instant recording (.re4)
- Image export (Saving the recorded image in bitmap or jpg)
- 2-Way audio
- On screen PTZ control
- Event history log & status panel
- Event log search utility (Searching for relevant image)
- Surveillance mode
- Mapping feature
- Text search

# HVRM Series - HD DVR

## HD, DVR, NVR, Video Server, IP Cam

### 8/ 4 Channel HD DVR

#### SPECIFICATIONS

ITEM	HD-800M	HD-400H	HD-400M
Operating System	Embedded Linux		
Video Input	8	4	4
Video Output	1 HDMI/1VGA		
Live Displays	1, 4, 8	1, 4	1, 4
Playback displays	1, 4, 8	1, 4	1, 4
Video compression	H.264 / JPEG		
Live Displays Speed	240FPS @ 720P & 1080P	120FPS @ 720P & 1080P	120FPS @ 720P & 1080P
Record Resolution	1080P , 720P		
Record Speed	120FPS @ 720P, 60FPS @ 1080P	120FPS @ 720P, 60FPS @ 1080P	60FPS @ 720P, 30FPS @1080P
Alarm In/Out(Relay)	8/4	4/4	4/4
Emergency Record Mode	Yes		
System Control	Key Buttons, Remote Client, IR Remote, HKB-400, Mouse Controller GUI		
System Control S/W	Control Center, Web Brower		
PTZ Control	RS485/RS232		
Video Format	NTSC/PAL		
Audio	4ch input/ 1 ch output		
Display	Brightness, Contrast and covert Feature		
Camera Title	22 characters per Channel		
Recording Mode	Schedule, Event (Pre/Post), Manual (Emeryency)		
Recording Quality	5 levels of compression rate/Record frame rate adjustment		
Pre/Post Recording	Pre: 5 sec / Post: 60 sec		
Motion Detection	44x30 grid		
Search Mode	Schedule, Event, Thumbnail Date/time, Log, Text, Smart		
Playback Modes	forward, Reverse, Pause, 1x, 2x, 4x, 8x, 16x, 32x, 64x		
Multiplex Function	Simultaneous live display/Playback/Record, Remote monitoring/Playback		
Alarm Notification	Automatic e-mail, Internal buzzer, Relay-out, Pop-up screen, Network Event		
Support IPFR	Intelligent Power failure recovery		
Watermark	Yes		
Password Protection	11 level (Admin/User)		
Interface	1 RS 232C, 2 RS485		
Storage	4 internal SATA HDD		
Maximum Storage	8TB with eSATA		
Storage Extension	eSATA		
Back up	DVD writer (DVD-R4.7G media), eSATA USB, Network, NVS04R		
Network	TCP/IP, ARP, ICMP, DHCP, PPPoE, UDP, SMTP, SNMP, FTP, SNTP, HTTP		
Remote Control	Software application: Control Center CMS standard (Supplied basically)		
	Remote observation through web browser and mobile viewer		
	Functions: Monitor, Search, Playback, Backup, Event Monitor, PTZ		
Certification	FCC, CE, MIC, RoHS		
Power	Input: 100-230VAC		
Power Consumption	AC100-240V, 50/60Hz, Max, 75W, Typical 50W (TBD)		
Operation Temperature	5°C ~ 40°C (41F ~ 113F)		
Storage Temperature	-25°C ~ 70°C (-13F ~ 158F)		
operation Humidity	85% RH below		
Storage Humidity	95% RH below		
Dimension	17.5(W) x 15.2 (D) x 3.5 (H)		

Specifications are Subject to Change without notice.