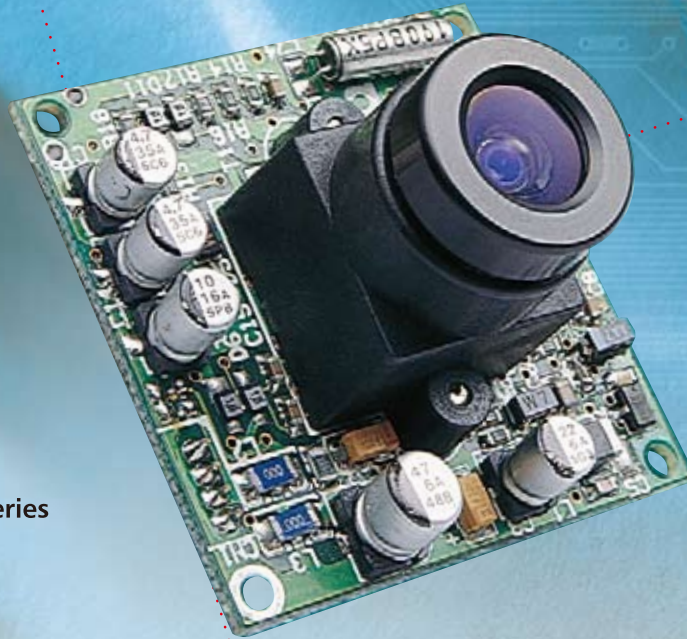
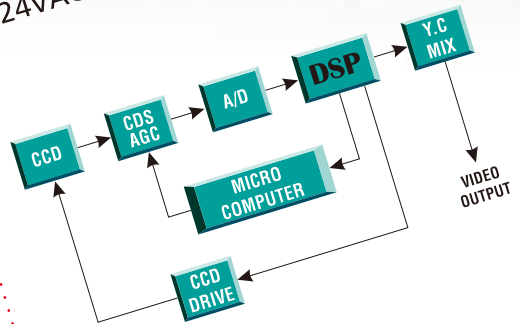


200 Series

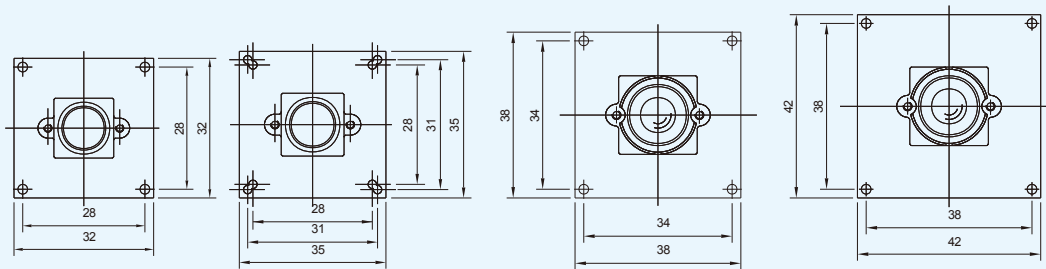


BOARD CAMERA

- ◆ Full digital process of BLC
- ◆ 2H mode of H.V. aperture correction
- ◆ Electronic Shutter up to 1/100,000
- ◆ 24VAC Optional



BUILDING A NEW SECURE ERA



SPECIFICATIONS



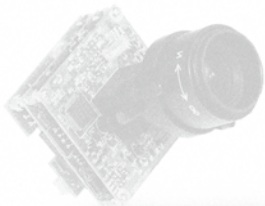
One More Eye
to Ensure
Your Security



ITEMS	MONOCHROME
PICK UP DEVICE	1/3" CCD image sensor
IMAGE SIZE H x V mm	1/3" 3.61 x 2.72, 1/3 " 3.64 X 4.82
PICTURE ELEMENTS	NTSC (EIA) 510 x 492, PAL (CCIR) 512 x 582 Medium Resolution
PICTURE ELEMENTS	NTSC (EIA) 771 x 494, PAL (CCIR) 753 x 582 High Resolution
H . SYNC FREQUENCY	NTSC/EIA 15.734 K Hz, PAL/CCIR 15.625 K Hz
SYNCHRONIZATION	Internal, Line-lock / For AC type (option)
V. FREQUENCY	NTSC/EIA 60 Hz, PAL/CCIR 50 Hz
H. RESOLUTION TV-LINE	420 / 580 Hi-Res
SENSITIVITY	0.01 Lux / 0.1 Lux Hi-Res
WHITE BALANCE	None
B. LIGHT COMPENSATION	Automatic
AUTO GAIN CONTROL	Automatic
ELECTRONIC SHUTTER	Automatic Range: 1/50 (1/60) ~ 1/100.000 sec
POWER CONSUMPTION	115mA / 125mA Hi-Res
APERTURE CORRECTION	1H mode enhancement
GAMMA CORRECTION	0.45
S/N RATIO	More than 48 dB
VIDEO OUTPUT	1 Vp-p, 75 Ohms composite
POWER SUPPLY	12 VDC
DIMENSIONS W x H x D mm	Single board for monochrome
WEIGHT g	100
STORAGE TEMPERATURE	-30°C TO +60°C
OPERATING TEMPERATURE	-10°C TO +45°C

Model	Device	Color	B/W	DC	AC	Auto iris	Lens	Hi-Res.	Medium Res.	Sensitivity (Lux)	Remark
HTC-216	1/3"		Y	Y			3.6mm	Y		0.1	42X42mm
HTC-250	1/3"		Y	Y			3.6mm		Y	0.01	35X35mm
HTC-240	1/3"		Y	Y			3.6mm		Y	0.01	32X32mm

All board camera accompany with 3.6mm F2.0 lens other lens are optional. E.g. 2.9, 3.7, 4.0, 6.0, 8.0, 12.0mm,...etc.



HUNT ELECTRONIC USA, INC.

Hunt Electronic is registered trademark of Hunt Electronic USA Incorporated, 2002 All rights reserved.

<http://www.huntcctv.com>