

# HVRM Series High Performance Digital Video Recorder - Mpeg 4

## 8/ 4 Channel Digital Video Recorder



HVRM Series supports 8/ 4 analog video channels. Video, Audio, and Text Event-Logs are digitized and stored on 2 internal hard-drives. Using advanced Mpeg 4 Compression average file size is 2-3KB while still maintaining enough clarity for facial-recognition . Due to our Mpeg 4 video compression HVRM series processes video into crisp, clear, 720x240 resolution up to 30 images per second (Half D1).

<b>Order Information</b>	HVRM-D800E HVRM-S400E
<b>Certificate</b>	FCC, CE, MIC, RoHS
<b>Dimension</b>	445(W) x 388(D) x 88(H)
<b>Shipping Weight</b>	22.88 lbs
<b>Unit per ctn</b>	1 pcs

### Key Features

- 8/ 4 channel Stand-alone DVR with MPEG4 and JPEG dual codec
- 8 channel max. 240ips recording with 30ips per channel
- 4 channel max. 120ips recording with 30ips per channel
- Adjustable resolution (CIF, 2CIF, 4CIF/D1) and frame rate per channel
- Support JPEG encoding for multi channel network monitoring
- 2 internal HDDs
- Support external storage via eSATA or 1394B up to 8TB on 8 channel
- Built-in multiplexer for live monitoring and playback
- Built-in DVD Writer, USB and eSATA port for data backup
- PTZ control (support preset) via RS485
- Support static and dynamic IP for xDSL, Cable-modem user
- Support IR remote controller and external keyboard/joystick via RS485 / 232
- Provide remote monitoring software (Control Center Software)
- Built-in Web Server for Web Browser viewing and playback\*
- Support NTP (Network Time Protocol) for time synchronization
- Support USB utility (Firmware & configuration value uploading)
- Date/Time, Log, Text, Smart search available from Control Center Software
- Support IPFR (Intelligent Power Failure Recovery)

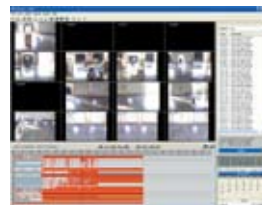
### Control Center Standard Software (Optional Software)



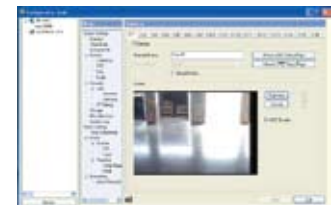
Control center



Mapping feature



Playback



Configuration tool

- Dual Monitor support
- Support Max 128ch simultaneous monitoring (when using dual monitor)
- Various screen division (1/4/9/16/25/36/49/64)
- Alarm Popup and Sequential switch monitor
- Support DirectX Display (Full screen Display is possible)
- Managing and controlling site on Tree UI
- View Set mode (Group and Map mode for management of each channel)
- Recording (.re3)
- Smart search
- Instant Recording (.re3)
- Image Export (Saving the recorded image in bitmap or jpg)
- Audio in/out
- On Screen PTZ
- Event history Log & Status Panel
- Event Log Search Utility (Searching for relevant image)
- Surveillance Mode
- Map Mode
- Text search

## SPECIFICATIONS

ITEM	HVRM-D800E	HVRM-S400E
Operating System	Embedded Linux	Embedded Linux
Video Input (BNC, 1Vp-p)	8	4
Video Output	2BNC, 1 VGA	1BNC, 1 VGA
Loop Out (BNC, 1Vp-p)	N/A	4 with Auto-termination
Live Displays	1, 4, 9	1, 4
Playback Displays	1, 4, 9	1, 4
Video Compression	MPEG4, JPEG	
File Size	2~3KB @ (CIF), 13K @ (full D1)	2~3KB @ (CIF), 13K @ (full D1)
Live Display Speed	240/240ips (NTSC/PAL)	120/100ips (NTSC/PAL)
Record Resolution	D1, HALF D1, CIF	
Record Speed	240/240 @ 720x240 (Half D1), 240/120 @720x480 (Full D1)	120/120 @ 360x240 (CIF), 120/60 @ 720x240 (Half D1), 120/30 @720x480 (Full D1)
Alarm In/Out(Relay)	8 alarm inputs, 4 relay outs	4 alarms inputs, 4 relays outs.
Emergency Record Mode	Yes	N/A
System Control	Key buttons, Remote Client, IR Remote	Key buttons, Remote Client, IR Remote, Keyboard Controller
System Control SW	Control Center, Web Browser	
PTZ control	RS485	RS232
Video Format	NTSC/PAL	
Audio	1ch Input, 1ch Output	4ch Input, 1ch Output
Display	Brightness, Contrast and Covert Feature	Brightness, Contrast
Camera Title	16 Characters per Channel	
Recording Mode	Schedule, Event (Pre/Post)	Schedule, Event (Pre/Post)
Recording Quality	5 Levels of Compression Rate / Record Frame Rate Adjustment	
Pre/Post Recording	Pre: 5 sec / Post: 60 sec	Pre: 30 sec / Post: 120 sec
Motion Detection	22x15 NTSC/ 22x18 PAL	16x12 NTSC/ 16x12 PAL
Search Mode	Date/Time, Event alarm, Text, Smart search (motion)	
Playback Modes	Forward, Reverse, Pause, 1x, 2x, 4x, 8x, 16x, 32x, 64x	Forward, Reverse, Pause, 1x, 2x, 4x, 8x, 16x, 32x
Multiplex Function	Simultaneous Live Display, Playback, Record, Remote Monitoring/Playback	
Alarm Notification	Automatic E-mail, Internal Buzzer, Relay-Out, Pop-Up Screen, Network Event	Automatic E-mail, Internal Buzzer, Relay-Out, Pop-Up Screen, Network Event
Support IPFR	Intelligent Power failure recovery	
Watermark	Yes	
Password Protection	2 Level Password (Admin/User)	
Interface	1 RS-232C, 2 RS-485, 1 USB, 1 Ethernet	1 RS-232C, 1 Ethernet, 3 USB
Storage	2 SATA HDD	2 IDE HDD
Maximum Storage	8TB	1.5TB
Storage Extension	eSATA	N/A
Back up	USB, DVDRW, Network, eSATA	USB, CDRW, Network
Network	LAN, WAN(xDSL), DHCP, ARP, ICMP, PPPoE, WESP, UDP, TCP/IP, SMTP, FTP	
Remote Client	Control Center Lite-D, Control Center Pro (optional)	
Power	Input: 100-230VAC, 50/60 Hz,	
Power Consumption	Max 60W, Average 35W	
Operation Temperature	0 °C ~ +40°C	
Storage Temperature	-20 °C~ +60°C	
Operation Humidity	93% RH Below	
Storage Humidity	95% RH Below	
Dimension / Weight	420(W) x 294(D) x 98(H) / 12.1 lbs	

*Specifications are Subject to Change without notice.*



**HUNT ELECTRONIC USA, INC.**

Hunt Electronic is registered trademark of Hunt Electronic USA Incorporated, 2002 All rights reserved.

<http://www.huntcctv.com>