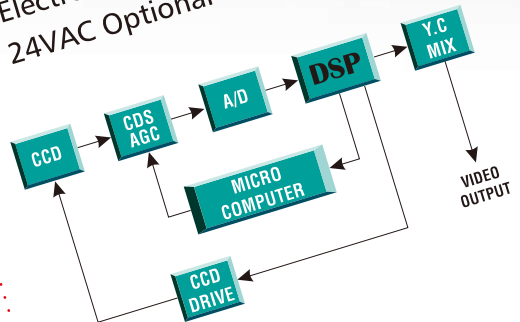


200 Series

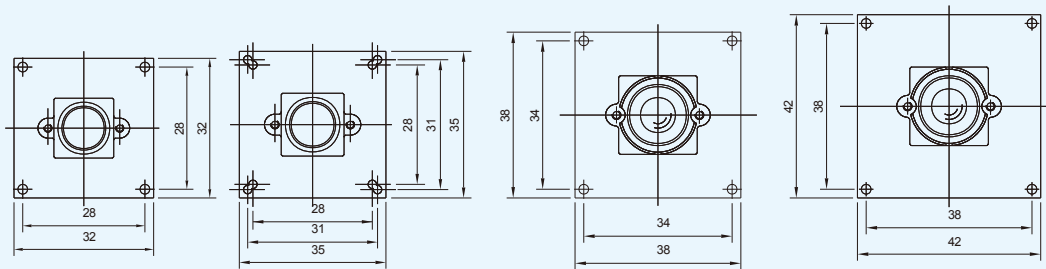


BOARD CAMERA

- ◆ Full digital process of BLC
- ◆ 2H mode of H.V. aperture correction
- ◆ Digital process of color matrix
- ◆ Electronic Shutter up to 1/100,000
- ◆ 24VAC Optional



BUILDING A NEW SECURE ERA



SPECIFICATIONS

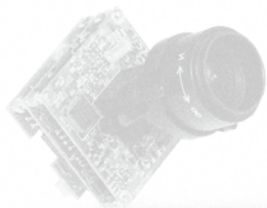
ITEMS	COLOR
PICK UP DEVICE	1/3", 1/3" CCD image sensor
IMAGE SIZE H x V mm	1/3" 3.61 x 2.72, 1/3" 3.64 X 4.82
PICTURE ELEMENTS	NTSC (EIA) 510 x 492, PAL (CCIR) 512 x 582 Medium Resolution
PICTURE ELEMENTS	NTSC (EIA) 771 x 494, PAL (CCIR) 753 x 582 High Resolution
H . SYNC FREQUENCY	NTSC/EIA 15.734 K Hz, PAL/CCIR 15.625 K Hz
SYNCHRONIZATION	Internal, Line-lock / For AC type (option)
V. FREQUENCY	NTSC/EIA 60 Hz, PAL/CCIR 50 Hz
H. RESOLUTION TV-LINE	400 / 540 Hi-Res
SENSITIVITY	1 Lux / 0.05 Lux Hi-Res
WHITE BALANCE	Auto trace white balance
B. LIGHT COMPENSATION	Automatic
AUTO GAIN CONTROL	Automatic
ELECTRONIC SHUTTER	Automatic Range: 1/50 (1/60) ~ 1/100.000 sec
POWER CONSUMPTION	220mA / 240mA Hi-Res
APERTURE CORRECTION	2 H mode enhancement
GAMMA CORRECTION	0.45
S/N RATIO	More than 48 dB
VIDEO OUTPUT	1 Vp-p, 75 Ohms composite
POWER SUPPLY	12 VDC
DIMENSIONS W x H x D mm	Two fold boards for color
WEIGHT g	100
STORAGE TEMPERATURE	-30°C TO +60°C
OPERATING TEMPERATURE	-10°C TO +45°C

Model	Device	Color	B/W	DC	AC	Auto iris	Lens	Hi-Res.	Medium Res.	Sensitivity (Lux)	Remark
HTC-2H1	1/3"	Y		Y			3.6mm		Y	1	42X42mm
HTC-2H6	1/3"	Y		Y			3.6mm	Y		0.05	42X42mm

All board camera accompany with 3.6mm F2.0 lens other lens are optional. E.g. 2.9, 3.7, 4.0, 6.0, 8.0, 12.0mm,...etc.



One More Eye
to Ensure
Your Security



ISO 9001
Certified

HUNT
ELECTRONIC

HUNT ELECTRONIC USA, INC.

Hunt Electronic is registered trademark of Hunt Electronic USA Incorporated, 2002 All rights reserved.

<http://www.huntcctv.com>